

## EVERYTHING YOU NEED IS INCLUDED!

### Efficiency & Sustainability

- Select Energy Star Appliances
- Higher density insulation
- Electric Heat Pump Water Heater (4x efficient)
- High efficiency heating/cooling systems, include Heat Pump w/air handler
- TRIPLE PANE windows for efficiency & noise
- Fully insulated garage doors
- Bellmont Cabinets 1300 series made sustainably



### Home Exteriors

- Fully landscaped front yards, include irrigation
- Fully fenced & landscaped backyards (sod/bark)
- Hardie siding that stands up to PNW weather
- Exterior trim on all window and doors
- Sherwin Williams brand paint
- Covered outdoor living spaces with raised patio to maximize usable space & reduce or eliminate steps (per plan)
- Two frost free exterior hose bibs
- Two convenient waterproof exterior power outlets



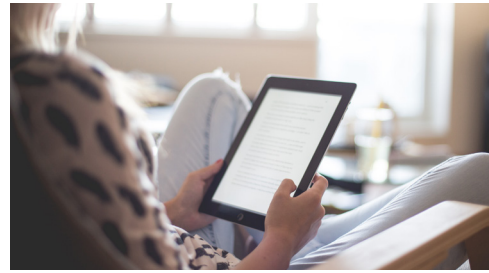
### Home Interiors

- Modern 2-panel site painted doors throughout
- Millwork expertly site finished, including 3" base
- Thoughtful use of windows to maximize light
- 48" Linear Electric Fireplace
- Durable scratch resistant plank style Laminate flooring on main floor living area. (excludes Home Office)
- Carpet & 6 lb pad in carpeted areas (per plan)
- High-end metal stair rail (per plan)
- Closets include wire shelf systems
- Designer selected accent walls
- Energy Star Washer & Dryer
- Stair Skirt Boards for a streamlined look
- 2" Faux Wood Cordless Blinds (operable only, SGD not included)

## Standard Features Continued ...

### Technology

- Central media panel for easy home connectivity
- Dedicated WiFi access point for extended home Internet reach (via Internet provider)
- CAT6 network jacks throughout (Great Room, Home Office & All Bedrooms)
- WiFi enabled thermostat
- WiFi enabled Garage door opener w/camera
- Automated whole home ventilation for reduced humidity and fresh air to the home.
- Garage is prewired for Electric Vehicle charger



### Kitchens

- Built locally, Bellmont cabinets deliver Euro-style frame-less cabinets made with sustainable materials. Cabinets include designer pulls, soft close doors & full extension soft close drawers.
- Tall 40" upper cabinets offer extra storage, optional under cabinet LED lighting is available
- 3cm Quartz counter with Subway tile backsplash
- Large stainless steel under-mount sink with convenient pull-out faucet
- Kitchen Appliance package: Refrigerator, 30" electric range with micro hood microwave, and dishwasher
- Garbage Disposal

### Primary Suite & Bathrooms

- Bellmont Cabinets continue into the bathrooms, with the soft close doors & drawers
- Tile counter & backsplash in all baths
- Modern Chrome fixtures and faucets
- Large Primary suite includes Fiberglass shower stall, to keep cleaning easy. Large slide in tub (per plan)
- Thoughtfully placed obscure glass windows to maximize light while maintaining privacy. ( per plan)

### Community Highlights

- Fully Fenced
- Sidewalks for safety and walk-ability
- HOA Maintained front yards
- Park with space for fun and relaxing



[www.RushResidential.com](http://www.RushResidential.com)

Reported standard features are approximate and may vary by floor plan. Standard features and pricing are subject to change. Standards vary depending on neighborhood. Floor plans are a general representation of, and may vary from, actual constructed floor plans. For more information, contact your Rush Residential Sales Representative. Rush Residential reserves the right to change standard features & floor plans at any time.  
\* Due to energy changes lots 31-34 DO NOT follow these standard features